



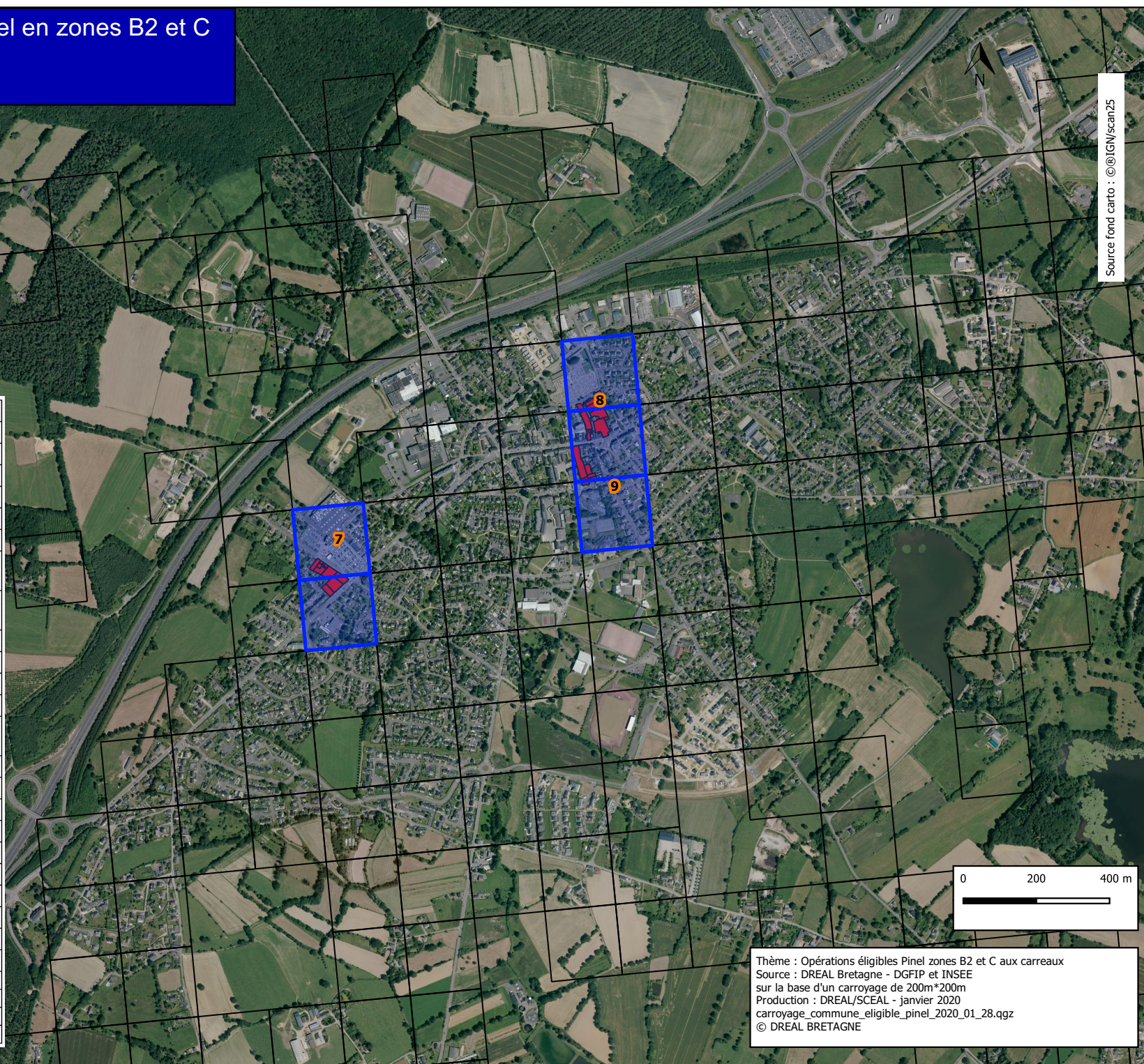
Opérations éligibles au pinel en zones B2 et C aux carreaux (200 x 200m)

PRÉFET DE LA RÉGION BRETAGNE

Liffré

Source fond carto : @IGN/scan25

Numéro	Parcelle cadastrale
1	AR0323, AR0326
2	AI0002, AE0430
3	AD0756, AD0757
4	OJ0300, OJ0504, OJ0231, OJ0299, OJ0361
5	AK0742, AK0744, AK0745
6	AI0652
7	BL0027, BL0028, BL0029, BL0065, BL0066, BL0067, BL0068, BL0069, BL0070, BL0071, BL0072
8	BB0226, BB0227, BB0088, BB0090, BB0091, BB0092, BA0109, BA0110, BA0112, BA0115, BA0119, BA0190
9	BD0232, BD0237, BD0238, BD0241, BD0242
10	AP0012, AP0013, AP0014, AP0015, AP0016, AP0301
11	AC0182, AC0183, AC0184
12	NAB0026, AB0027ULL
13	AA0069, AA0070, AA0071, AA0073, AA0324, AA0325, AA0327, AC0001
14	AM0522, AM0523, AM0581, AM0701
15	DK0023, AL0117
16	DK0014, DK0015
17	AK0369
18	AK0485, AK0486, AK0487
19	BH0500
20	AI0328
21	AK0152
22	AM0029, AM0030, AM0725, AM0726, AM0759
23	AM0216
24	AV0072, AV0074, AV0075, AV0341, AV0343, AV0345
25	BL0869
26	BM0482, BM0611, BM0615
27	BK0632



Thème : Opérations éligibles Pinel zones B2 et C aux carreaux
 Source : DREAL Bretagne - DGFIP et INSEE
 sur la base d'un carroyage de 200m*200m
 Production : DREAL/SCEAL - janvier 2020
 carroyage_commune_eligible_pinel_2020_01_28.ggz
 © DREAL BRETAGNE